

Product Introduction: Suanzaoren Lily Bulb Poria Tea

IP NO.: ZL2016110407723

PRODUCT
INTRODUCTION

PRODUCT
EFFICACY

PRODUCTION
PROCESS

MARKET
VALUE



PRODUCT INTRODUCTION

[Suanzaoren Lily Bulb Poria Tea]

The Suanzaoren Lily Bulb Poria Tea developed by Hunan Union Health Science and Technology Research Institute Co.Ltd is a health-preserving tea drink with patented research results (IP NO.: ZL2016110407723), dedicated to alleviating the sleep problems of modern people caused by work and life pressure. The product is based on traditional Chinese medicine formula and is made of eight natural plants. No hormones and antibiotics are added to achieve the effect of calming the nerves and helping sleep while minimizing the impact on the body.

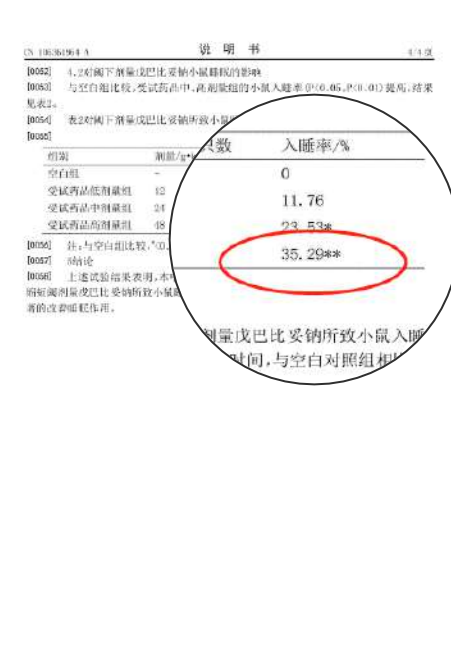
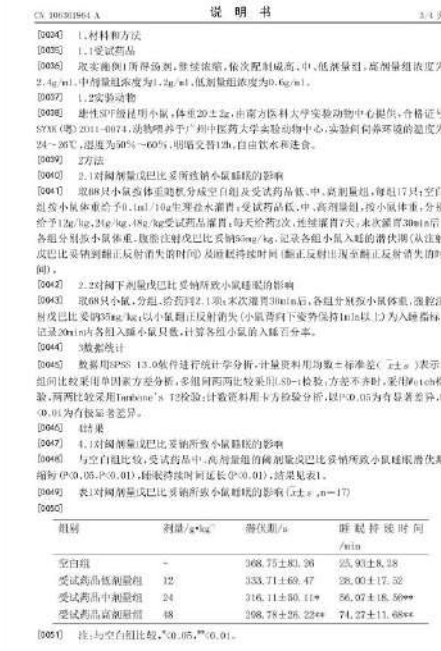
Ingredients: Suanzaoren, Lily bulb, Poria, Citri sarcodactulis fructus, Lotus seed, Gardenia, Double Red Rose, Wolfberry

Net content: 150g (5g*30 bags)



PRODUCT INTRODUCTION / PATENT

In order to verify the efficacy of the product formula, multiple rounds of multi-group control experiments were carried out through direct sleep experiments on mouse. The data shows that the sleep rate increased by 35.29% compared with the previous one after using the patented formula product for 7 days. At the same time, it increased the sleep rate and shortened sleep. Significant differences also appeared in multiple outcomes such as incubation period and prolonged sleep time.

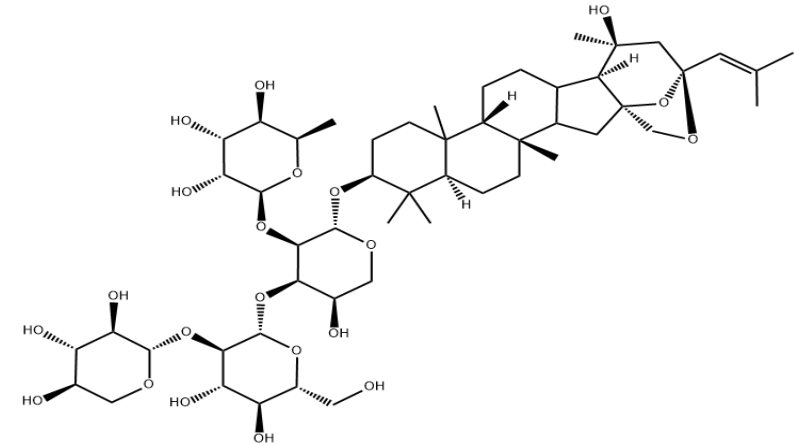




PRODUCT EFFICACY

Studies have shown that Suanzaoren is rich in active substances such as total alkaloids, flavonoids, and aminobutyric acid, which have the effect of relieving central nervous activity and calming the mind. Suanzaoren saponins and flavonoids in jujube seed have the effect of increasing slow wave sleep. It has no obvious interference effect on learning and memory.

Zhang Zhongjing, a medical sage in the Eastern Han Dynasty, once used the traditional Chinese suanzaoren to treat insomnia. From the "Suanzao Decoction" by Sun Simiao, a medical fairy in the Tang Dynasty, and "Compendium of Materia Medica" by Li Shizhen in the Ming Dynasty, the classic herbal medicine Suanzaoren nourishes the heart, calms the nerves, and improves sleep.



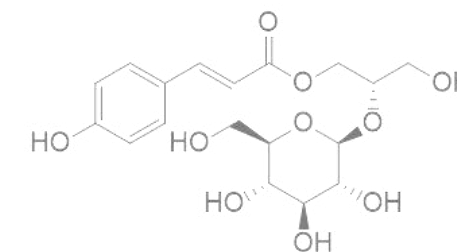
Jujuboside



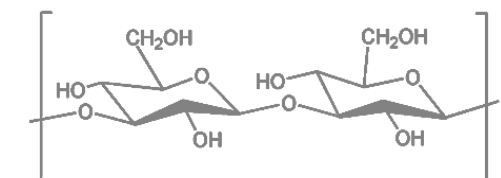


PRODUCT EFFICACY / INGREDIENTS

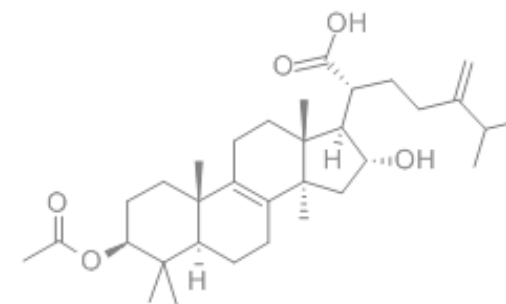
Ingredients		Efficacy Description
Suanzaoren		The high-quality suanzaoren from Xingtai, Hebei Province are large and plump, rich in jujube saponins A+B, which can nourish the heart, nourish the liver, calm the mind and calm the nerves. Suanzaoren contains active substances such as total alkaloids, flavonoids, and aminobutyric acid, which have the effect of relieving central nervous activity and calming the mind.
Lily bulb		Lily bulb from Lanzhou, white as jade in color, fleshy and sweet, contains lily glycosides and glucosides, which have sedative and hypnotic effects, can significantly improve sleep quality, shorten the time to fall asleep, and are mostly used for fatigue, palpitations, insomnia and dreaminess.
Poria		Produced in Luotian County, which is known as the "Hometown of Poria ", the chemical components of Poria Cocos are mainly polysaccharides, triterpenes, fatty acids, sterols, enzymes, etc. Among them, Poria polysaccharides have anti-tumor, liver protection, diuretic, anti-aging, Anti-inflammatory, hypolipidemic, immune-enhancing, hypnotic, etc.
Wolfberry		Selected from Ningxia Zhongning premium-grade, big and plump, thick meat, wolfberry anthocyanins can effectively improve myocardial anti-peroxidation ability, reduce excessive free radical damage caused by sleep deprivation, thereby inhibiting myocardial cell pathology caused by PSD damage.
Citri sarcodactulis fructus		The pyridoxine, thiamine, riboflavin, copper and iron content in the Citri Sarcodactulis Fructus are higher, while the thiamine and pyridoxine content in the pulp are higher, which can significantly prolong sleep time and improve sleep quality.
Lotus seed		Lotus seeds contain lotus seeds, aromatic glycosides and other components that have a sedative effect. After eating, they can promote the pancreas to secrete insulin, which in turn can increase the supply of 5-hydroxytryptamine, so it can make people fall asleep.
Gardenia		The representative substances of the two main active ingredients of gardenia, geniposide in iridoid glycosides and gardenia yellow pigment in pigments, have various pharmacological effects, can relieve fire and trouble, and can significantly shorten sleep incubation period.
Double red rose		Double red roses have strong DPPH free radical scavenging ability, strong linoleic acid peroxidation inhibitory ability, and can effectively inhibit the automatic oxidation of oil; rose polysaccharides have strong effects on scavenging free radicals and inhibiting lipid peroxidation effect.



lilioside



Poria polysaccharide



Poria cocos triterpenoids



PRODUCT EFFICACY

Symptomatic conditioning

Starting from the cause of the disease, a variety of natural plant materials are selected to improve the nerves and liver, strengthen the spleen, shorten the latency period of sleep, and treat insomnia from the root.



Food as nourishment

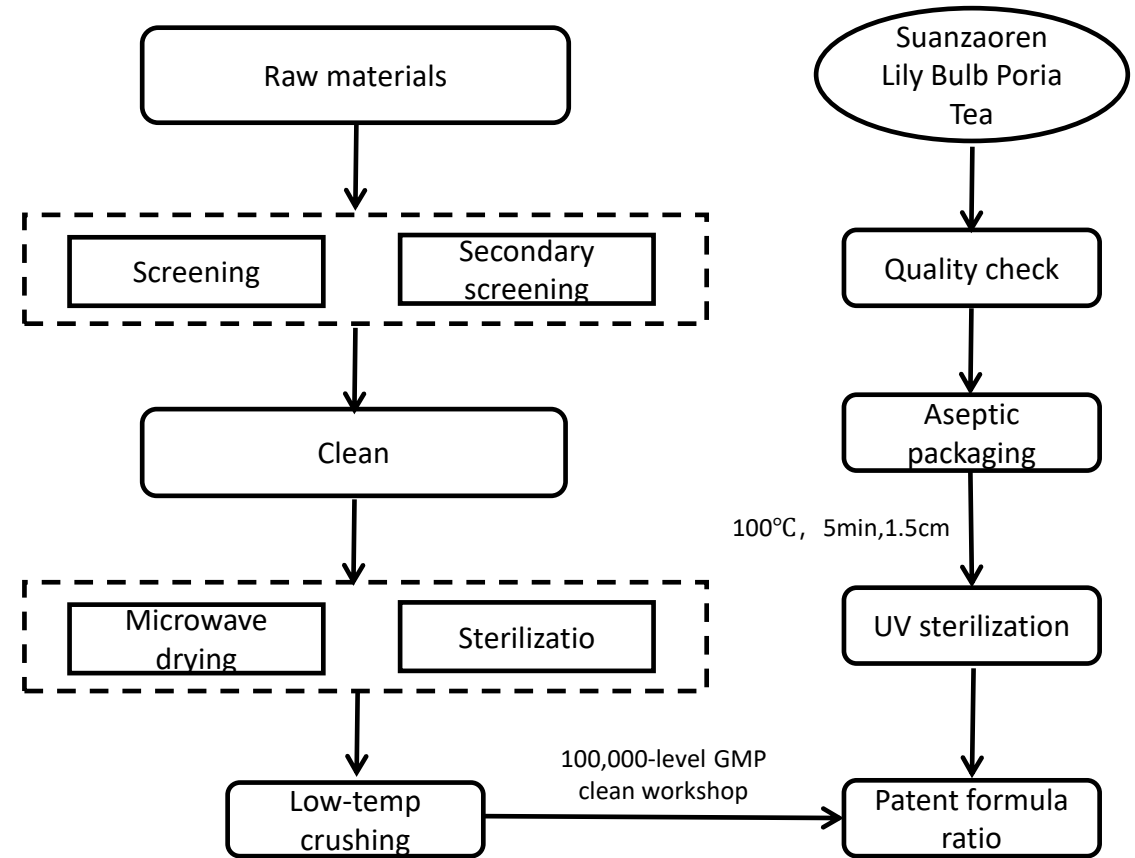
Suanzaoren, lily bulb, and poria are all ingredients of the same origin as medicine and food, which have dual-purpose properties of medicine and food. Long-term consumption will not burden the body and will not cause drug dependence.





PRODUCTION PROCESS

Raw materials are carefully selected from high-quality origins. After secondary manual screening, they are microwave-dried and sterilized, and blended and evenly stacked in strict accordance with the patented formula, so as to maximize the effect of calming the nerves and helping sleep.



Production process flow chart of Suanzaoren Lily Bulb Poria Tea

MARKET VALUE

Saunzaoren Lily Bulb Poria Tea has quickly become a popular health-preserving product as soon as it is launched on the market. The monthly sales volume exceeded 20,000 boxes in the month it was launched, and its direct economic value exceeded 1 million. At the same time, with the popularity of the entire category, many other brands have followed suit and produced similar sleep aid products. Overall, the employment of the entire supply chain has exceeded 1,000, and the indirect economic value has exceeded 50 million. The continuous influence will also expand further.



2W±

Monthly sales qty

100W±

Monthly sales amount

1000±

New increased employments

5000W

Indirect economic value

THANKS FOR
YOUR ATTENTION!

